

Linea Alluminio

www.torbel.it

Spagnolette CONNECT



Maniglia
Linea
Design moderno



Maniglia
Elica
Design contemporaneo



Maniglia
Foglia
Design rustico



Vantaggi



C Ganci dotati di tamponi nylon intercambiabili :

- 3 diversi tamponi da applicare sui ganci alto e basso per compensare al meglio i giochi in base alla situazione di posa.
- Garantisce un funzionamento ideale della spagnoletta su ogni tipo di anta.



C 1 supporto universale

- con blocco a clips che consente un rapido cambio della maniglia.



C Fissaggio del supporto maniglia

- sull'asta alluminio grazie ad un grano sul retro del supporto stesso.



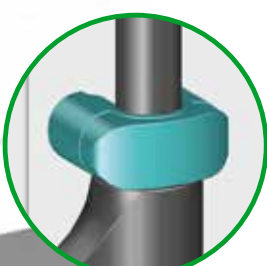
C Supporto maniglia completo di tamponi nylon :

- 3 diversi tamponi nylon per compensare al meglio i giochi delle diverse configurazioni di posa.
- Garantisce un funzionamento ideale della spagnoletta su ogni tipo di anta.



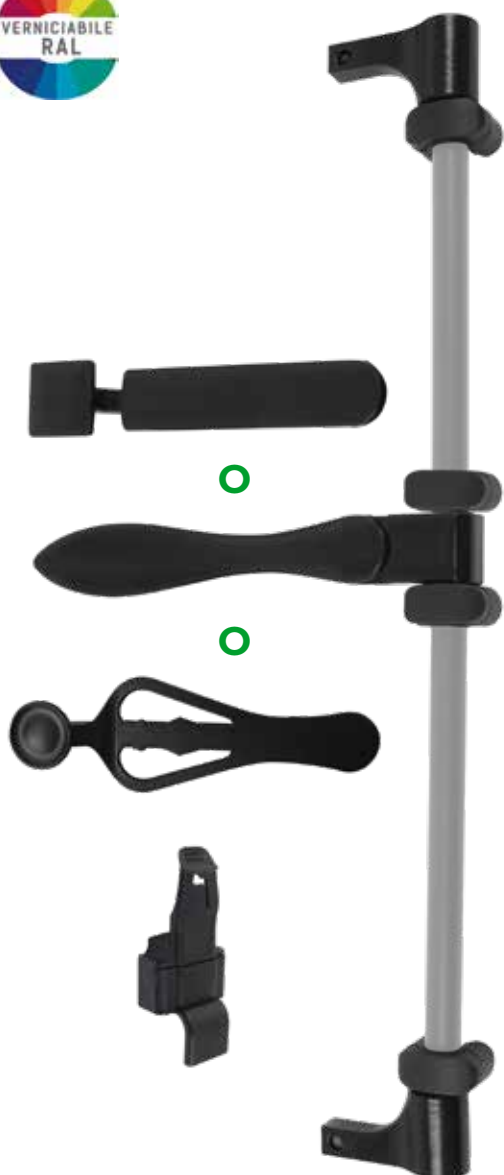
C Incontro maniglia nylon o alluminio :

- Sicurezza grazie all'antisollevamento dall'esterno.
- 3 fori di fissaggio per una perfetta tenuta sull'anta.
- Viti di fissaggio a scomparsa grazie ad una mascherina a clipsaggio rapido.
- Dito di tiro.
- Carter di rivestimento all'verniciabile disponibile come optional.





C Guida Asta S8 nylon


- con mascherina a clipsaggio rapido.





Kit spagnoletta Linea

Cod.		
04PD50J	9005	10
04PD50P	9016	10

Kit spagnoletta Elica

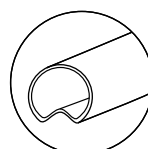
Cod.		
04PE50J	9005	10
04PE50P	9016	10

Kit spagnoletta Foglia

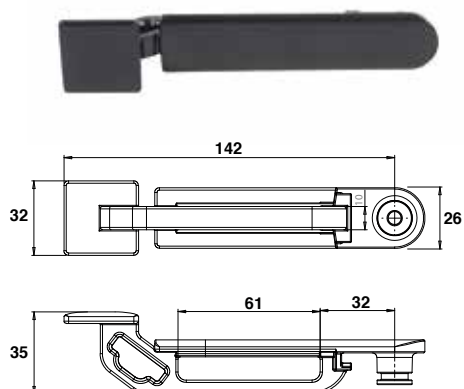
Cod.		
04PF50J	9005	10
04PF50P	9016	10

Composizione :



- 1 maniglia
- 1 supporto maniglia
- 1 incontro maniglia nylon con sicurezza
- 1 gancio alto
- 1 gancio basso
- 4 guida asta S8 nylon

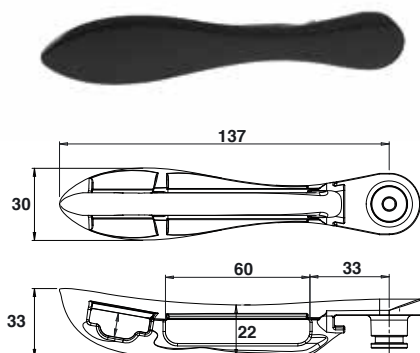


*Compatibili con aste
alluminio scanalate
P. 75 / P. 101*





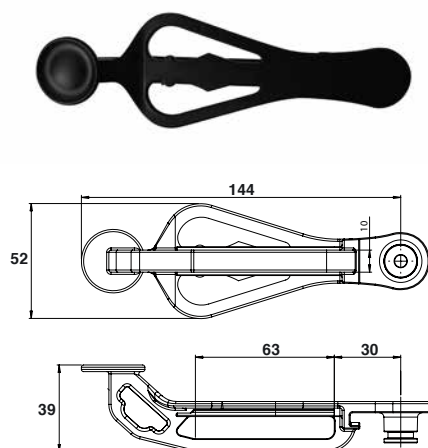
Maniglia Linea

Cod.		
04PD21J	9005	50
04PD21P	9016	50





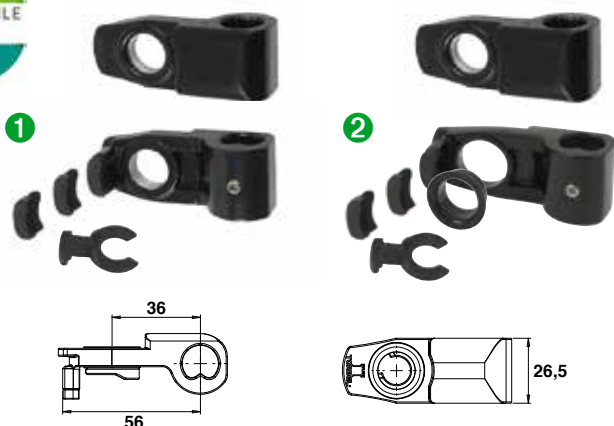
Maniglia Elica

Cod.		
04PD22J	9005	50
04PD22P	9016	50



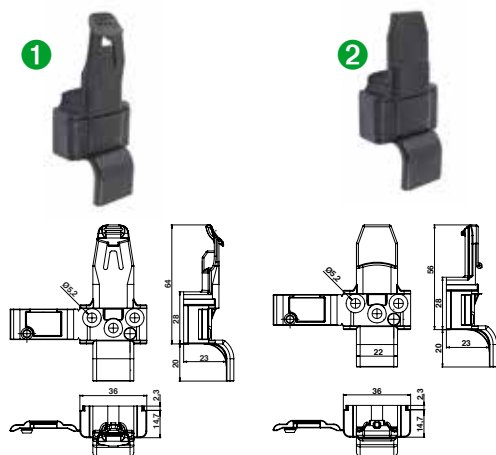
Maniglia Foglia

Cod.		
04PD23J	9005	50
04PD23P	9016	50



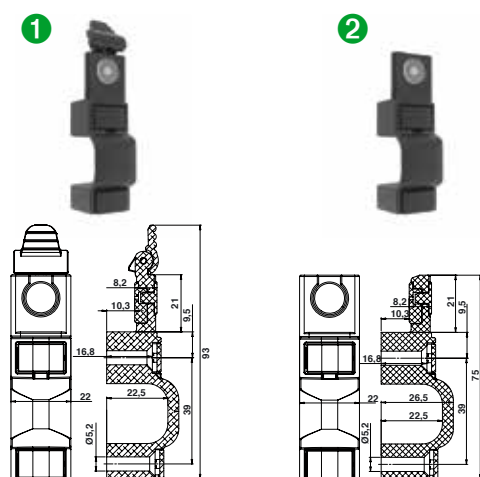
**Supporto maniglia + viti
+ clips + tamponi nylon**

Cod.		
1 Senza boccola		
04PD30J	9005	50
04PD30P	9016	50
2 Con boccola		
04PD33J	9005	50
04PD33P	9016	50



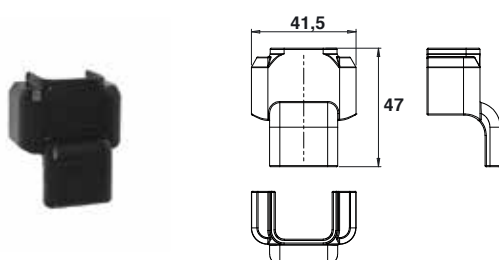
**Incontro maniglia nylon
con copri viti**

Cod.		
1 Con sicurezza		
04PD409	9005	50
04PD40C	9016	50
2 Senza sicurezza		
04PD449	9005	50
04PD44C	9016	50



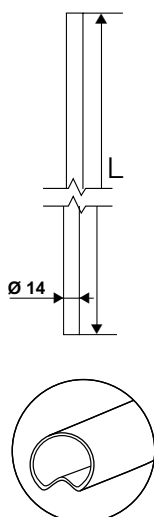
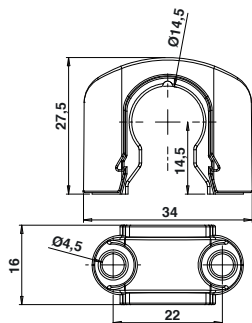
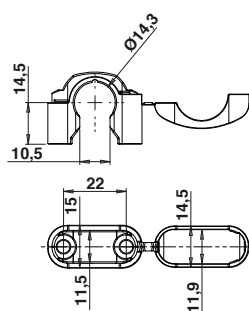
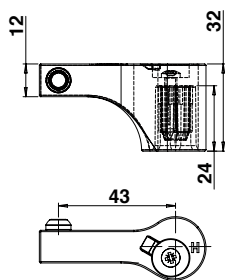
**Incontro maniglia
alluminio con copri viti**

Cod.		
1 Con sicurezza		
04PD46J	9005	50
04PD46P	9016	50
2 Senza sicurezza		
04PD45J	9005	50
04PD45P	9016	50



**Carter di rivestimento
alluminio per incontro maniglia**

Cod.		
04PD41J	9005	50
04PD41P	9016	50



Ganci Connect + tamponi nylon + viti

Cod.		
------	--	--

Modello alto

04PD42J	9005	50
04PD42P	9016	50

Modello basso

04PD43J	9005	50
04PD43P	9016	50

Guida asta S8 nylon

Cod.		
------	--	--

07405S89	9005	150
07405S8C	9016	150

Guida asta S9 zama verniciabile

Cod.		
------	--	--

0740400	GREZZO	150
074040J	9005	150

Modello grezzo consegnato con base nylon nero.

Asta spagnoletta alluminio scanalata

Cod.		L	
------	--	---	--

04P213J	9005	1270	10
04P216J	9005	1570	10
04P223J	9005	2270	10
04P227J	9005	2700	10
04P246J	9005	4600	10
04P213P	9016	1270	10
04P216P	9016	1570	10
04P223P	9016	2270	10
04P227P	9016	2700	10
04P246P	9016	4600	10



Semplice : sistema che consente una posa agevole garantendo un alto grado di precisione.

Pratico : macroregolazione durante la posa in cantiere.

Rapido : permette di posare le vostre persiane in un attimo.

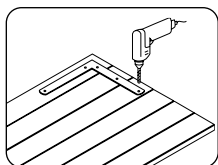
Composizione

Per comporre uno squadro o un T regolabile, bisogna ordinare :

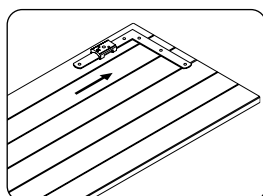
- 1 squadro o 1 T
- 1 nodo, Ø12 mm
- 1 inserto di giunzione

Squadro con regolazione verticale e laterale. Riduce di 1/3 i vostri tempi di posa.

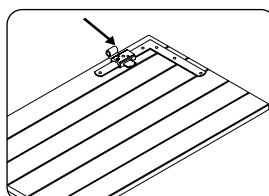
1. Fissare lo squadro, la scanalatura contro l'imposta nel senso verticale.



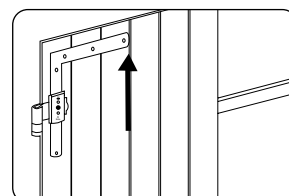
2. Inserire l'inserto di giunzione sullo squadro.



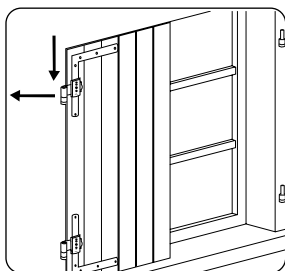
3. Infilare il nodo scelto nell'inserto di giunzione.



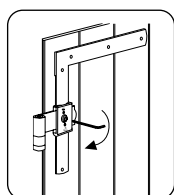
4. Posare l'imposta nell'alloggiamento e bloccarla verso l'alto con un giravite per fare leva.



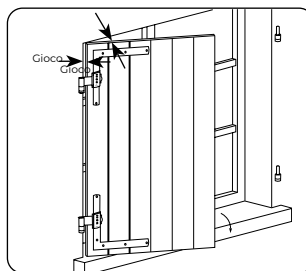
5. Far scorrere l'inserto di giunzione fino a far collimare il nodo con il cardine esistente a muro.



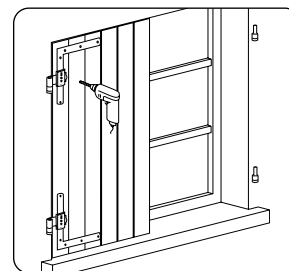
6. Stringere la vite tenendo la chiave dalla parte più corta. La vite serve solo a posizionare l'inserto di giunzione per regolare il nodo. Sono i fissaggi (rivetto, vite, bullone...) che assicurano la solidità dell'insieme.



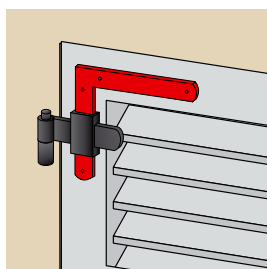
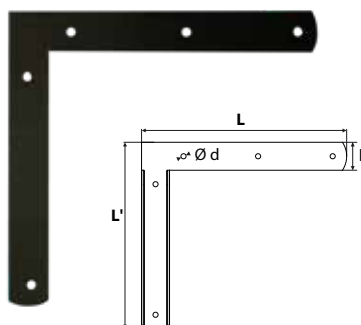
7. Verificare il funzionamento ed eventuali giochi ed aggiustare se necessario.



8. Forare attraverso l'inserto di giunzione (nodo, squadro, persiana) e fissare il tutto.



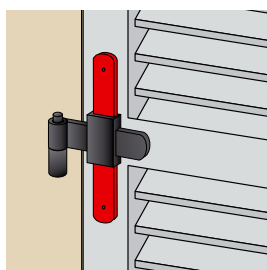
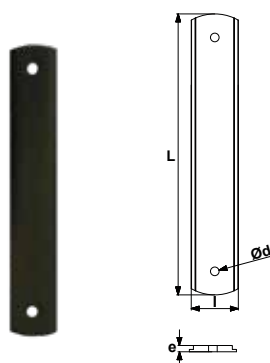
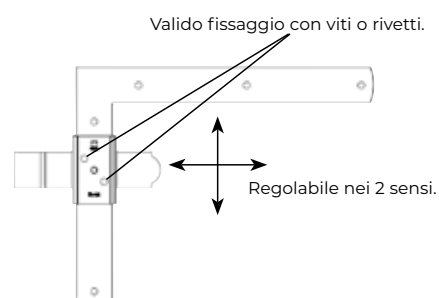
Squadri , T regolabili, piastra per cerniera a "H"



Squadro alluminio regolabile

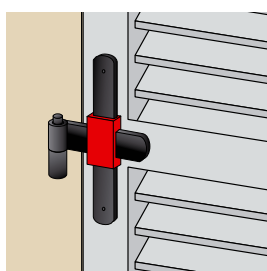
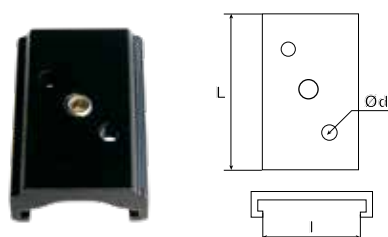
Cod.		L	L'	l	e	ØD	
Modello in alto sinistra							
29PF10E	9005	220	200	30	4	Ø5,5	25
Modello in alto a destra							
29PF11E	9005	220	200	30	4	Ø5,5	25

Sono disponibili 2 modelli di nodi in alluminio sagomato, sezione 30x4 Ø12.



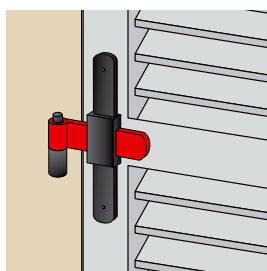
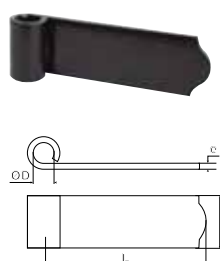
T alluminio regolabile

Cod.		L	l	e	ØD	
41PF64E	9005	179	30	4	Ø5,5	50



Inserto di giunzione alluminio regolabile

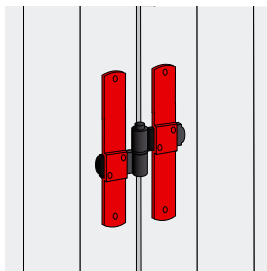
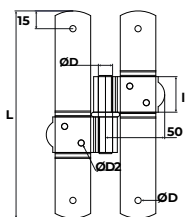
Cod.		L	l	ØD	
41PF68E	9005	45	31	Ø5,5	25



Nodo alluminio sagomato regolabile non forato

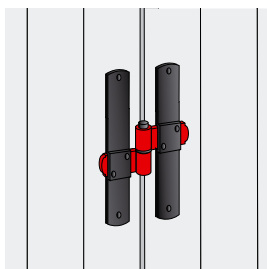
Cod.		L	l	e	ØD	
41PF73E	9005	75	30	4	Ø12	50
41PF74E	9005	115	30	4	Ø12	50

Nodi regolabili e cerniera a "H"



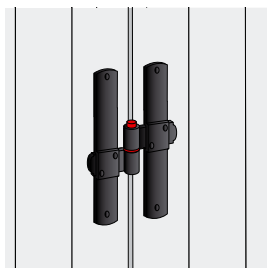
Piastra per cerniera a H ambidestra

Cod.		L	I	e	Ød	
41PAF1J	9005	175	30	3	Ø5	50



Nodo

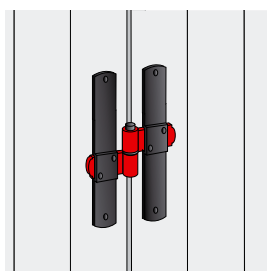
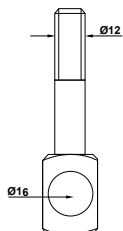
Cod.		L	I	e	Ød2	
41PA2BE	9005	50	30	3	Ø5	50



Perno ottone Ø12 con rondella

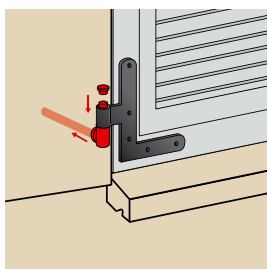
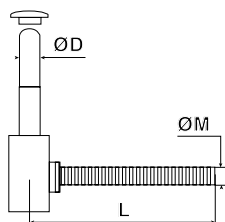
Cod.		L	ØD	
A21G134	CATA	175	Ø12	25

Dima, cardine



Dima per foro

Cod.		ØD1	ØD2	
99BS05	Z.BIANCO	Ø10	Ø16	1
99BS06	Z.BIANCO	Ø12	Ø16	1

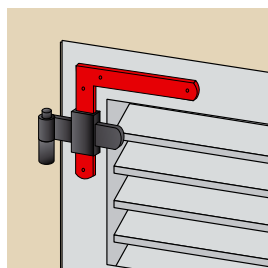
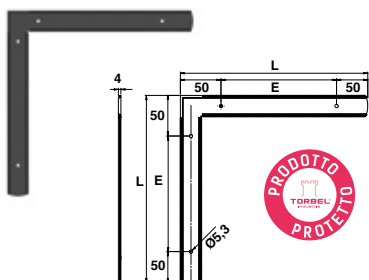


Cardine per resina chimica D12 mm

Cod.		L	Ø M	Ø D	
1502080	9005	90	12	Ø 12	24
1502080120	9005	120	12	Ø 12	24
1502080140	9005	140	12	Ø 12	24
1502080180	9005	180	12	Ø 12	24
1502080240	9005	240	16	Ø 12	24

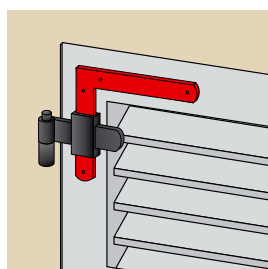
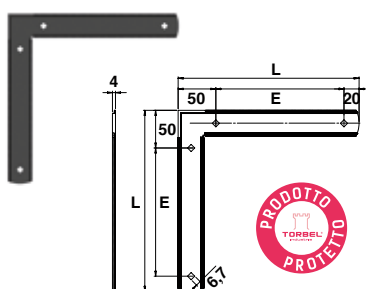
- Antisfilamento accidentale.
- Boccola in nylon.
- Rosetta di copertura.
- Tappo di finitura.
- Gambo M12.
- Finitura zincato + verniciato.

Squadri e T regolabili reversibili - punta tonda



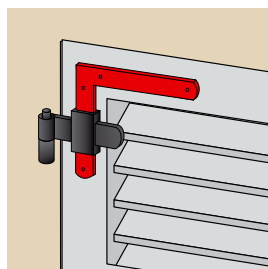
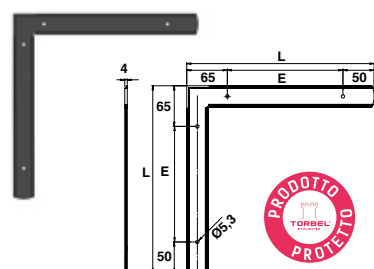
Squadro alluminio scanalato regolabile reversibile punta tonda 34x4 fori tondi

Cod.		L	E	
29RR41J	9005	300	200	25
29RR41P	9016	300	200	25



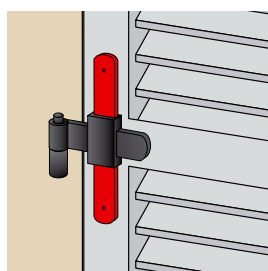
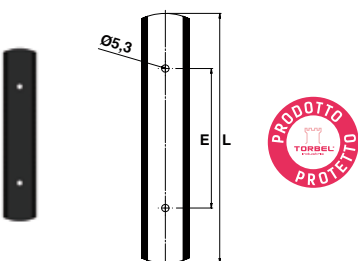
Squadro alluminio scanalato regolabile reversibile punta tonda 34x4 fori quadrati

Cod.		L	E	
29RR14J	9005	240	170	25
29RR22J	9005	300	200	25
29RR14P	9016	240	170	25
29RR22P	9016	300	200	25



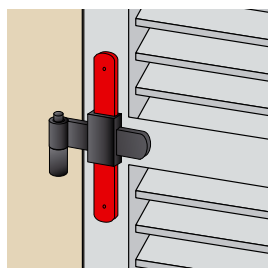
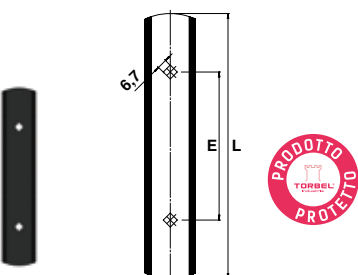
Squadro alluminio scanalato regolabile reversibile punta tonda 34x4 fori tondi

Cod.		L	E	
29RR15J	9005	240	170	25
29RR91J	9005	300	200	25
29RR15P	9016	240	170	25
29RR91P	9016	300	200	25



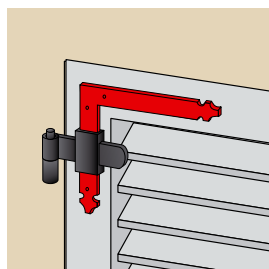
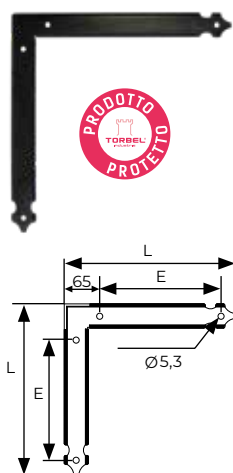
T alluminio scanalato regolabile punta tonda 34x4 fori tondi

Cod.		L	E	
41RR12J	9005	179	100	25
41RR23J	9005	275	200	25
41RR12P	9016	179	100	25
41RR23P	9016	275	200	25



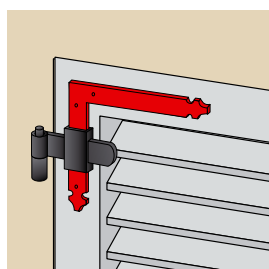
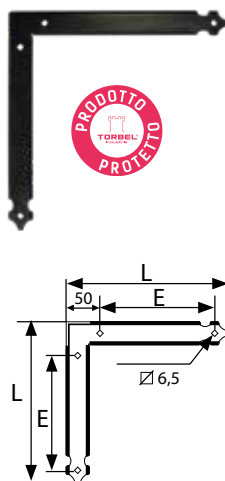
T alluminio scanalato regolabile punta tonda 34x4 fori quadrati

Cod.		L	E	
41RR61J	9005	179	100	25
41RR61P	9016	179	100	25



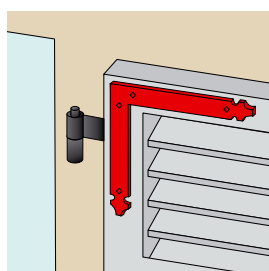
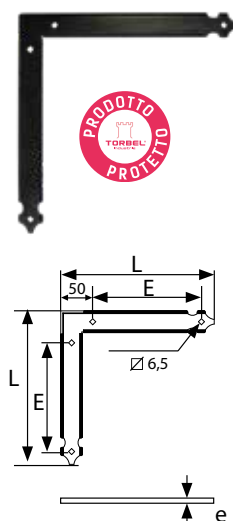
Squadro alluminio scanalato punta fiore
34x4 fori tondi

Cod.		L	E	
29RR90J	9005	300	185	25



Squadro alluminio scanalato punta fiore
34x4 fori quadri

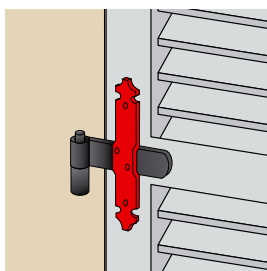
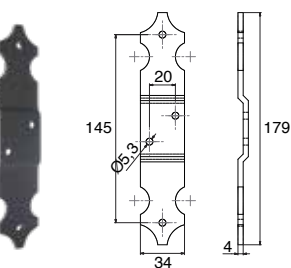
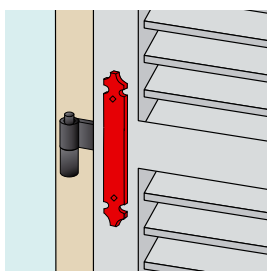
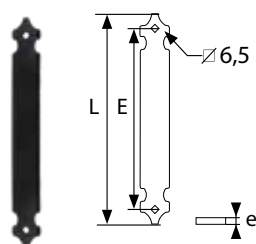
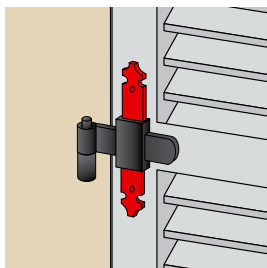
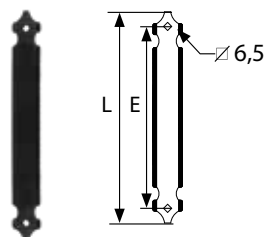
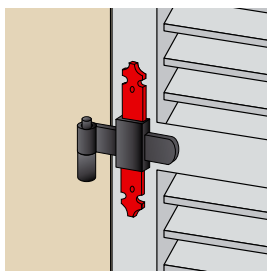
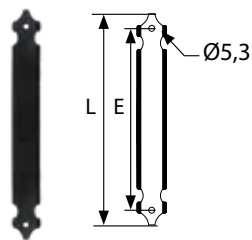
Cod.		L	E	
29RR10J	9005	240	155	25
29RR20J	9005	300	185	25
29RR10P	9016	240	155	25
29RR20P	9016	300	185	25



Contro squadro alluminio punta fiore
34 x e fori quadri

Cod.		L	E	e	
29PA92J	9005	240	170	2	25
29PA96J	9005	300	200	3	25
29PA96P	9016	300	200	3	25

T regolabili scanalati



T alluminio scanalato punta fiore 34x4 fori tondi

Cod.		L	E	
41RR11J	9005	179	100	25
41RR21J	9005	275	200	25
41RR11P	9016	179	100	25
41RR21P	9016	275	200	25

T alluminio scanalato punta fiore 34x4 fori quadrati

Cod.		L	E	
41RR60J	9005	179	100	25
41RR30J	9005	275	200	25
41RR60P	9016	179	100	25
41RR30P	9016	275	200	25

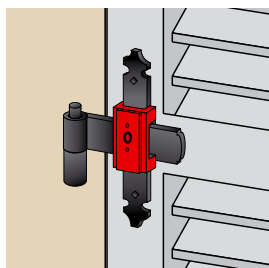
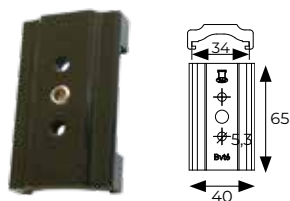
Contro-T alluminio punta fiore 34 x e fori quadrati

Cod.		L	E	e	
41PA6FJ	9005	179	100	2	50
41PA6SJ	9005	275	200	3	25
41PA6FP	9016	179	100	2	50
41PA6SP	9016	275	200	3	25

T alluminio scanalato punta fiore 34x4

Cod.		
41PA6VJ	9005	50

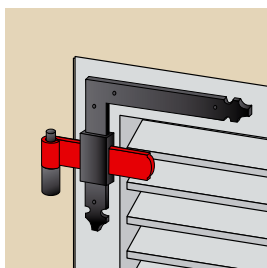
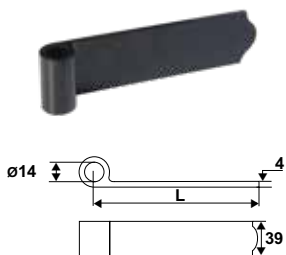
Inserito di giunzione



Inserito-nodo estruso alluminio regolabile Ø14

Cod.		
41CC10J	9005	25
41CC10P	9016	25

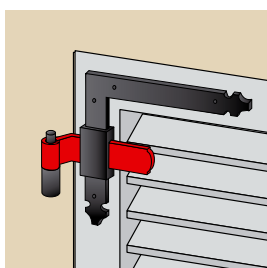
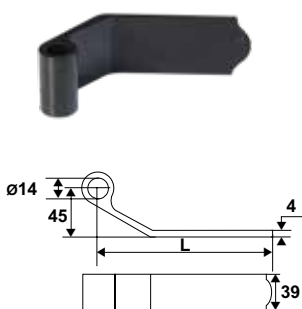
Inserito di giunzione scanalato regolabile. Si posa insieme con Squadro o T scanalato.



Nodo estruso alluminio non forato 39x4 Ø14

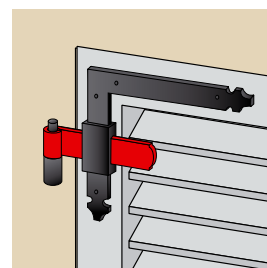
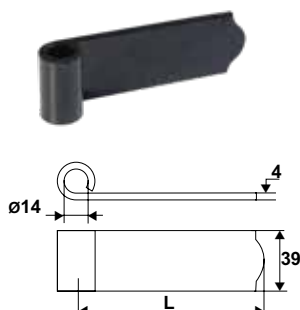
Cod.		L	
41PAT3J	9005	75	50
41PAT4J	9005	115	50
41PAT3P	9016	75	50
41PAT4P	9016	115	50

Si posa insieme con Squadro o T scanalato + Inserto di giunzione.



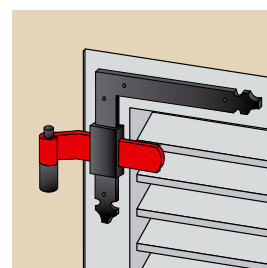
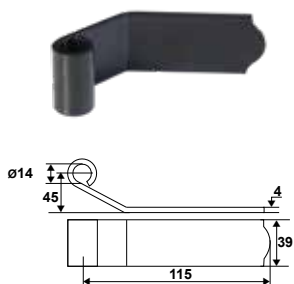
Nodo estruso alluminio, ad angolo non forato 39x4 Ø14

Cod.		L	
41PAT6J	9005	115	50
41PAT6P	9016	115	50



Nodo alluminio sagomato non forato 39x4 Ø14

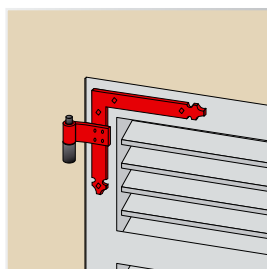
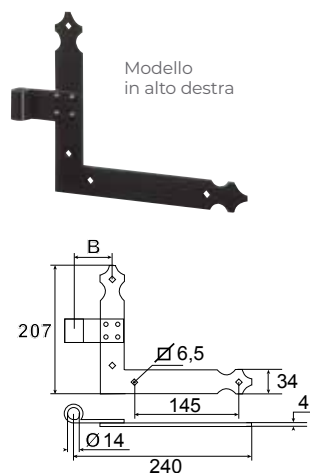
Cod.		L	
41PAP1J	9005	75	50
41PA74J	9005	115	50
41PA75J	9005	145	50
41PAP1P	9016	75	50
41PA74P	9016	115	50
41PA75P	9016	145	50



Nodo alluminio sagomato non forato ad angolo 39x4 Ø14

Cod.		
41PA76J	9005	50
41PA76P	9016	50

Squadri rivettati



Squadro alluminio rivettato 34x4 Ø14

Cod.



B

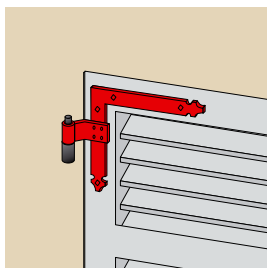
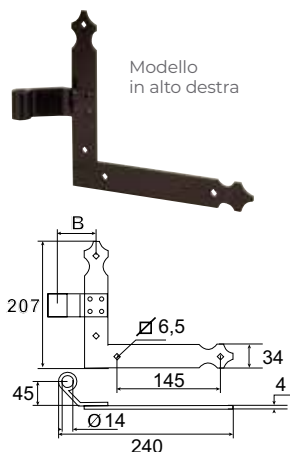


Modello in alto destra

29PAD3J	9005	46	25
29PA30J	9005	54	25
29PAD1J	9005	77	25
29PAD3P	9016	46	25
29PA30P	9016	54	25
29PAD1P	9016	77	25

Modello in alto sinistra

29PAD4J	9005	46	25
29PA31J	9005	54	25
29PAD2J	9005	77	25
29PAD4P	9016	46	25
29PA31P	9016	54	25
29PAD2P	9016	77	25



Squadro alluminio rivettato ad angolo 34x4 Ø14

Cod.



B

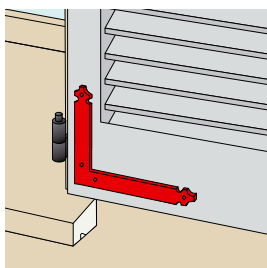
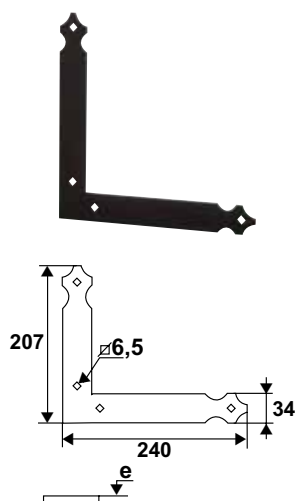


Modello in alto destra

29PA40J	9005	54	25
29PAC1J	9005	77	25
29PA40P	9016	54	25

Modello in alto sinistra

29PA41J	9005	54	25
29PAC2J	9005	77	25
29PA41P	9016	54	25



Contro squadro alluminio

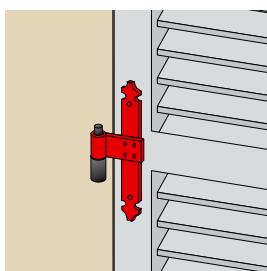
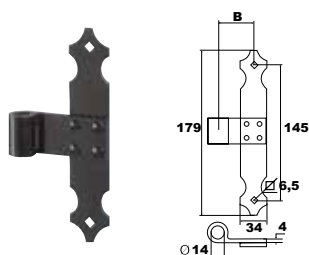
Cod.



e

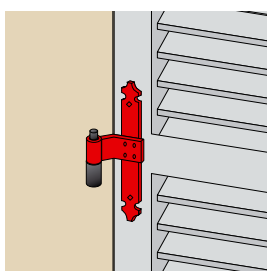
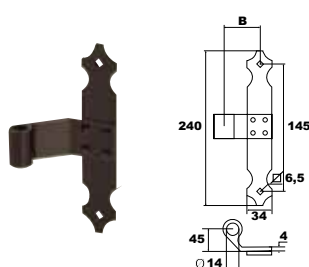


29PA61J	9005	2	25
29PA60J	9005	3	25
29PA61P	9016	2	25
29PA60P	9016	3	25



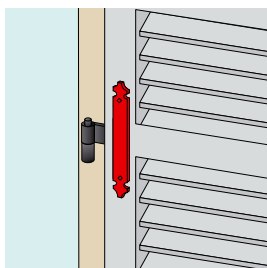
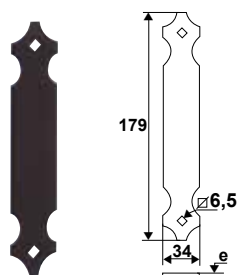
**T alluminio rivettato
34x4 Ø14**

Cod.		B	
41PAD2J	9005	46	25
41PA30J	9005	54	25
41PAD1J	9005	77	25
41PAD2P	9016	46	25
41PA30P	9016	54	25
41PAD1P	9016	77	25



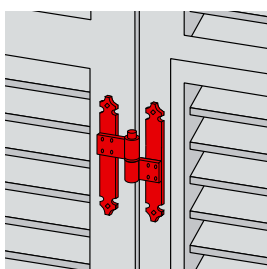
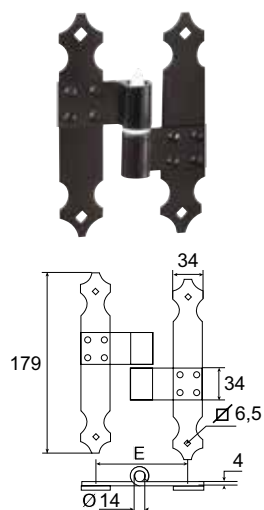
**T alluminio rivettato
ad angolo 34x4 Ø14**

Cod.		B	
41PA40J	9005	54	25
41PAC1J	9005	77	25
41PA40P	9016	54	25
41PAC1P	9016	77	25



Contro T alluminio

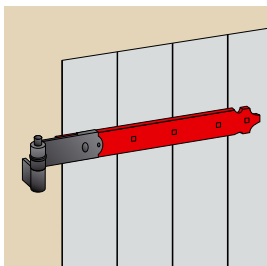
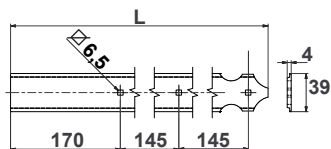
Cod.		e	
41PA66J	9005	2	50
41PA60J	9005	3	25
41PA66P	9016	2	50
41PA60P	9016	3	25



**H rivettato alluminio 34x4 Ø14
interasse 84**

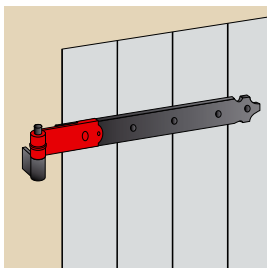
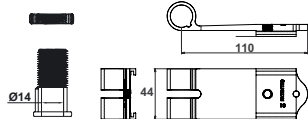
Cod.		
Modello sinistro		
41PA28J	9005	25
41PA28P	9016	25
Modello destro		
41PA29J	9005	25
41PA29P	9016	25

Bandelle universali



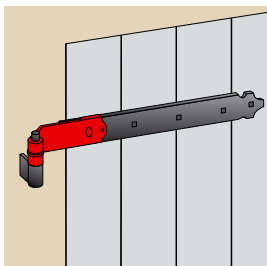
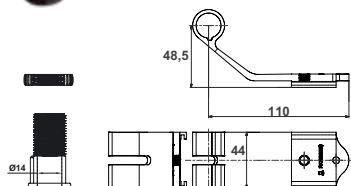
Estensione alluminio regolabile 39x4 fori quadri

Cod.		L	
10PBD3J	9005	370	30
10PBD4J	9005	515	30
10PBD5J	9005	660	30
10PBD3P	9016	370	30
10PBD4P	9016	515	30
10PBD5P	9016	660	30



Nodo alluminio dritto Ø14 per bandella universale

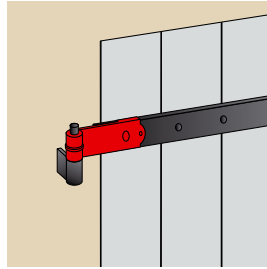
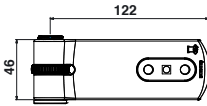
Cod.		
41NB10J	9005	30
41NB10P	9016	30



Nodo alluminio ad angolo dritto Ø14 per bandella universale

Cod.		
41NB20J	9005	30

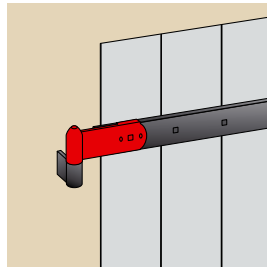
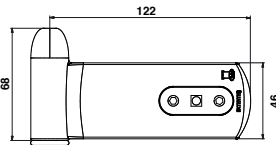
Nodi regolabili



Nodo zama dritto lungo Ø14 + boccola

Cod.		
42NB21J	9005	30
42NB21Q	9016	30

Regolabile
10 mm

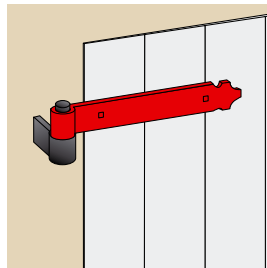
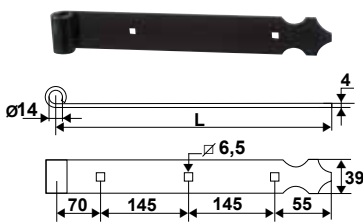


Nodo zama dritto Ø14/16 + boccola

Cod.		
Dx		
42NB31J	9005	30
42NB31Q	9016	30
42NB31S	9010	30
Sx		
42NB41J	9005	30
42NB41Q	9016	30
42NB41S	9010	30

Bandelle

1° foro a 70 mm.

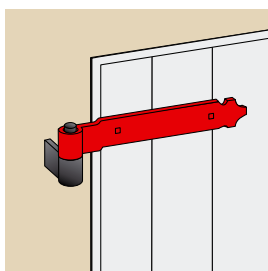
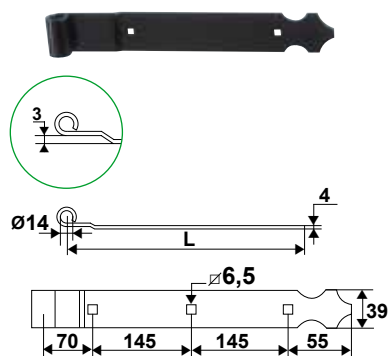


Bandella alluminio punta fiore 1° foro a 70 mm



Cod.		L	
11PA27J	9005	270	30
11PA41J	9005	415	30
11PA56J	9005	560	30
11PA70J	9005	705	30
11PA85J	9005	850	30
11PA27P	9016	270	30
11PA41P	9016	415	30
11PA56P	9016	560	30
11PA70P	9016	705	30
11PA85P	9016	850	30

Bandelle

1° foro a 70 mm.

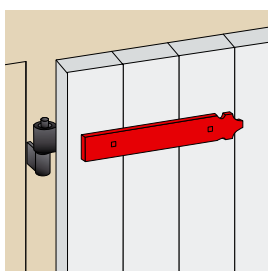
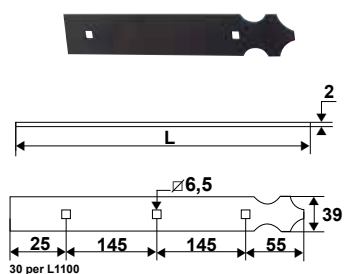


Bandella alluminio punta fiore con piega
1° foro a 70 mm



Cod.		L	
11PAP1J	9005	270	30
11PAP2J	9005	415	30
11PAP3J	9005	560	30
11PAP4J	9005	705	30
11PAP5J	9005	850	30
11PAP1P	9016	270	30
11PAP2P	9016	415	30
11PAP3P	9016	560	30
11PAP4P	9016	705	30
11PAP5P	9016	850	30

Contro bandelle

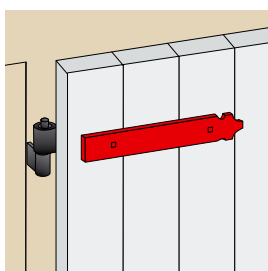
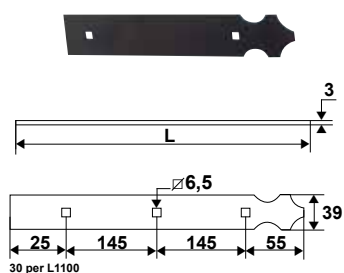
1° foro a 70 mm.





Contro bandella alluminio punta fiore
39 x 2 per bandella 1° foro a 70 mm

Cod.		L	
11P2A2J	9005	225	30
11P2A3J	9005	370	30
11P2A5J	9005	515	30
11P2A6J	9005	660	30
11P2A8J	9005	805	30
11P2A2P	9016	225	30
11P2A3P	9016	370	30
11P2A5P	9016	515	30
11P2A6P	9016	660	30

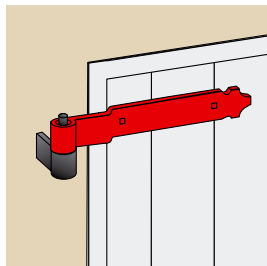
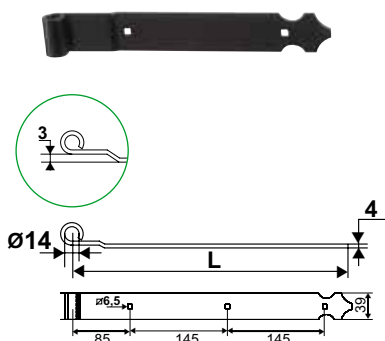
1° foro a 70 mm.



Contro bandella alluminio punta fiore
39 x 3 per bandella 1° foro a 70 mm

Cod.		L	
11PAC2J	9005	225	30
11PAC3J	9005	370	30
11PAC5J	9005	515	30
11PAC6J	9005	660	30
11PAC7J	9005	805	30
11PAC2P	9016	225	30
11PAC3P	9016	370	30
11PAC5P	9016	515	30
11PAC6P	9016	660	30
11PAC7P	9016	805	30

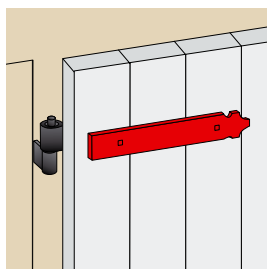
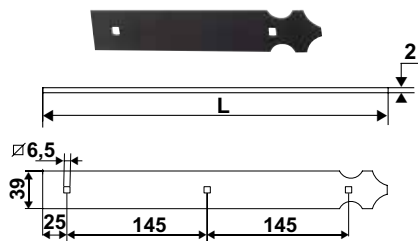
1° foro a 85 mm.



Bandella alluminio punta fiore con piega
39x4 Ø14 1° foro a 85 mm

Cod.		L	
11PGP2J	9005	270	30
11PGP4J	9005	415	30
11PGP5J	9005	560	30
11PGP7J	9005	705	30
11PGP8J	9005	850	30
11PGP2P	9016	270	30
11PGP4P	9016	415	30
11PGP5P	9016	560	30
11PGP7P	9016	705	30
11PGP8P	9016	850	30

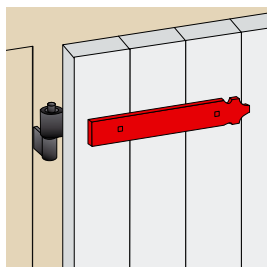
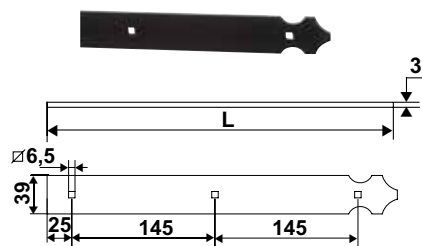
1° foro a 85 mm.



Contro bandella alluminio punta fiore
39x2 per bandella 1° foro a 85 mm

Cod.		L	
11PH21J	9005	210	30
11PH35J	9005	355	30
11PH50J	9005	500	30
11PH64J	9005	645	30
11PH79J	9005	790	30
11PH21P	9016	210	30
11PH35P	9016	355	30
11PH50P	9016	500	30
11PH64P	9016	645	30
11PH79P	9016	790	30

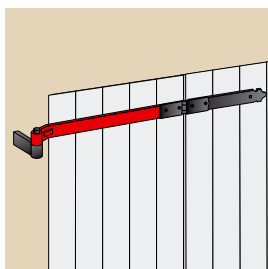
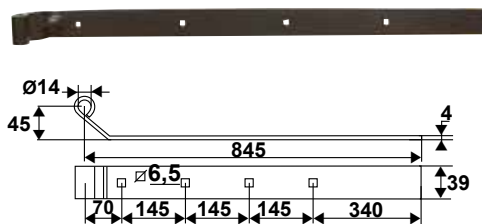
1° foro a 85 mm.



Contro bandella alluminio punta fiore 39x3
per bandella 1° foro a 85 mm

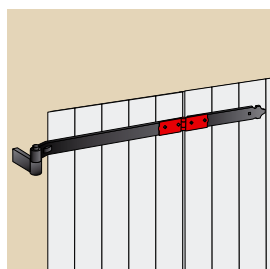
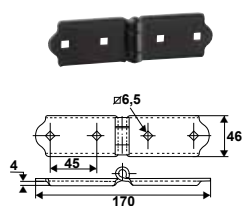
Cod.		L	
11PJ21J	9005	210	30
11PJ35J	9005	355	30
11PJ50J	9005	500	30
11PJ64J	9005	645	30
11PJ79J	9005	790	30
11PJ21P	9016	210	30
11PJ35P	9016	355	30
11PJ50P	9016	500	30
11PJ64P	9016	645	30
11PJ79P	9016	790	30

1° foro a 70 mm.





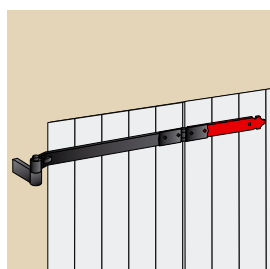
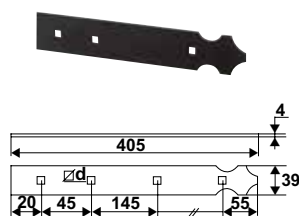
Bandella alluminio 39x4 1° foro a 70 mm

Cod.		
11PAE1J	9005	30
11PAE1P	9016	30





Cerniera TORBEL® alluminio

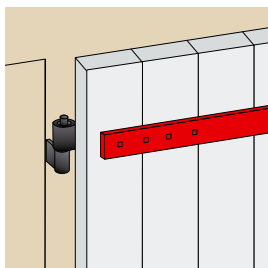
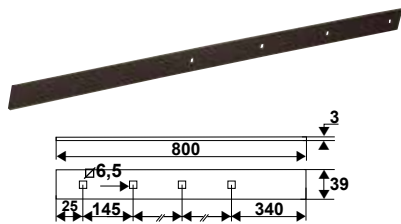
Cod.		
92PA40J	9005	28
92PA40P	9016	28



Estensione alluminio punta fiore

Cod.		
11PAD2J	9005	30
11PAD2P	9016	30

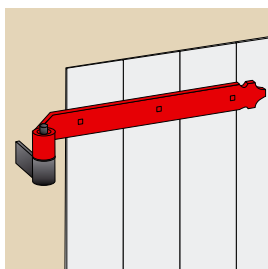
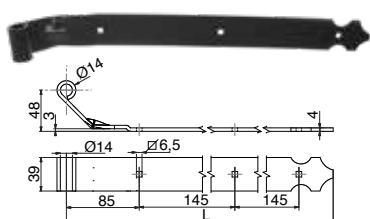
Articolazioni



Contro bandella alluminio 39x3

Cod.		
11PAD4J	9005	30
11PAD4P	9016	30

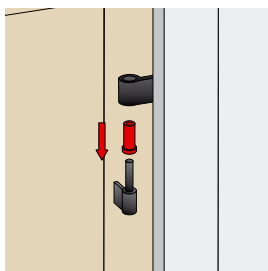
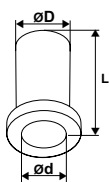
1° foro a 85 mm.



Bandella alluminio punta fiore con piega 39x4 Ø14 1° foro a 85 mm

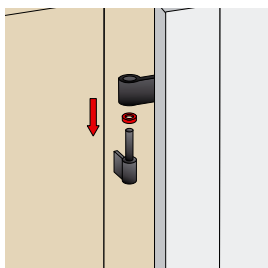
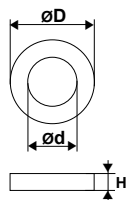
Cod.		L	
11PGQ2J	9005	415 30	
11PGQ3J	9005	560 30	

Boccole di riduzione



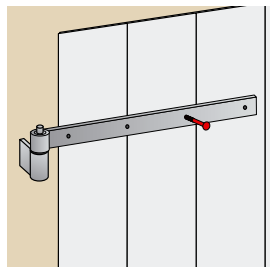
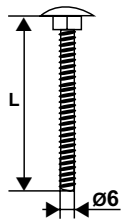
Boccola di riduzione nylon

Cod.		ØD	Ød	L	
5115008		Ø12	Ø10	30	10
5115089		Ø14	Ø8	39	1
5115009		Ø14	Ø10	45	10
5115029		Ø14	Ø12	45	10
5115069		Ø16	Ø14	45	10
5115109		Ø18	Ø14	42	10
5115129		Ø18	Ø16	42	10
5115019		Ø14	Ø10	45	10
5115039		Ø14	Ø12	45	10
5115079		Ø16	Ø14	45	10





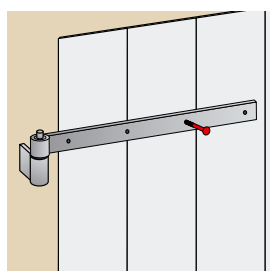
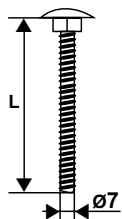
Boccola e rondelle nylon

Cod.		ØD	Ød	H	
A033306		Ø25	Ø14	3	50
A033309	NEUTRO	Ø25	Ø14	3	50
A033319	NEUTRO	Ø25	Ø16	3	50





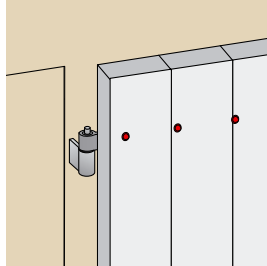
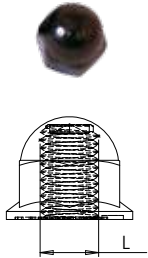
Vite alluminio Ø6

Cod.		L	
6503 06 37JG	9005	37	500
6503 06 40JG	9005	40	500
6503 06 45JG	9005	45	500
6503 06 50JG	9005	50	500
6503 06 60JG	9005	60	500
6503 06 37PG	9016	37	500
6503 06 40PG	9016	40	500
6503 06 45PG	9016	45	500
6503 06 50PG	9016	50	500
6503 06 60PG	9016	60	500



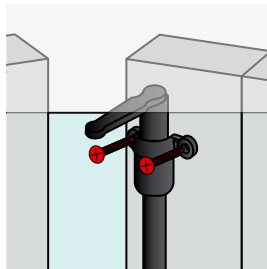
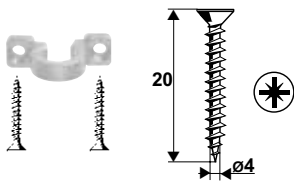
Vite alluminio Ø7

Cod.		L	
6503 07 35JG	9005	35	500
6503 07 40JG	9005	40	500
6503 07 45JG	9005	45	500
6503 07 60JG	9005	60	500
6503 07 40PG	9016	40	500
6503 07 45PG	9016	45	500



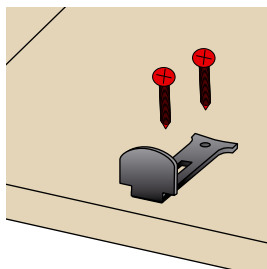
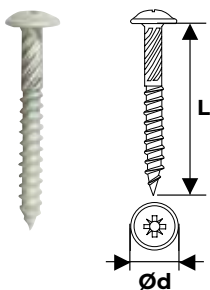
Dado cieco alluminio

Cod.		L	
7353 06 00JG	9005	M6	500
7353 07 00JG	9005	M7	500
7353 06 00PG	9016	M6	500
7353 07 00PG	9016	M7	500



Vite testa piatta inox

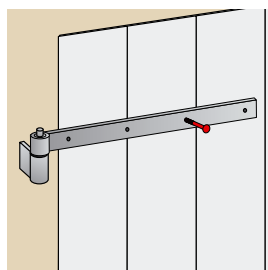
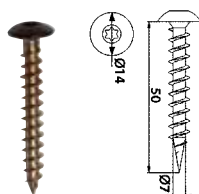
Cod.		
0602 04 20JE	9005	150
0602 04 20PE	9016	150





Vite testa bombata

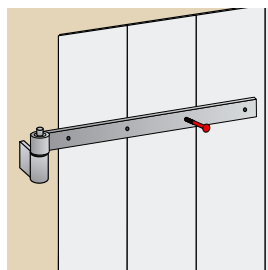
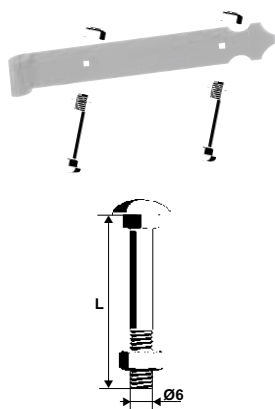
Cod.		L	Ød	
0952 06 45EE	9005	45	6	100
0952 05 40PE	9016	40	5	100

Per il fissaggio delle spagnolette TORBEL® e degli arresti.





Vite inox TORX

Cod.		
0872 07 50JF	9005	500
0872 07 50PG	9016	500



Bullone alluminio TRCC Ø6

Cod.		L	
6203 06 37JE	9005	37	100
6203 06 40JE	9005	40	100
6203 06 45JE	9005	45	100
6203 06 50JE	9005	50	100
6203 06 60JE	9005	60	100
6203 06 37PE	9016	37	100
6203 06 40PE	9016	40	100
6203 06 45PE	9016	45	100
6203 06 50PE	9016	50	100
6203 06 60PE	9016	60	100

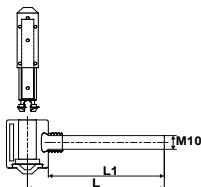
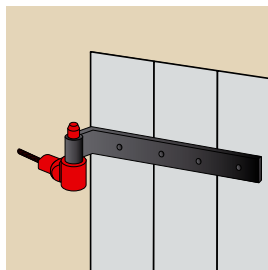
Per fissaggio delle bandelle su persiane alluminio o nylon.

Viti a testa tonda, sotto testa quadro complete di dado alluminio. Può essere dotato come optional con dado cieco in nylon.

Alluminio 6101 trattato termicamente, anodizzato nero, RAL 9005, RAL 9010 o 9016.

Esiste in Ø5 x 22, Ø6 lunghezza da 25 a 60 e Ø7 lunghezza da 35 a 70.

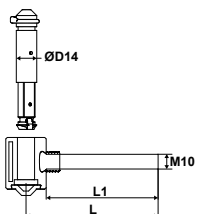
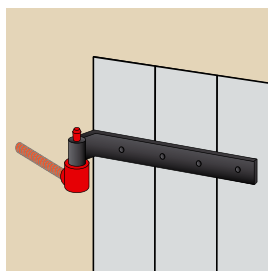
Perno con inserto Inox



Cardine nylon rinforzato perno c/inserto inox con clips

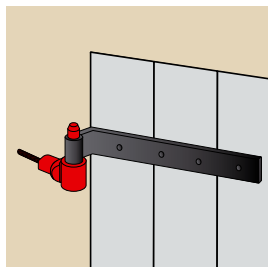
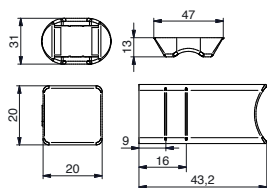
Cod.		L	L1	
61PIZ06		90	76	50
61PIZ26		135	121	50

Perno con inserto zincato



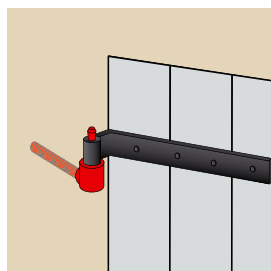
Cardine nylon rinforzato con clips

Cod.		L	L1	
61PAZ66		90	76	50
61PBZ86		135	121	50
61PAZ6C		90	76	50
61PBZ8C		135	121	50



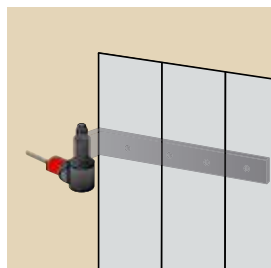
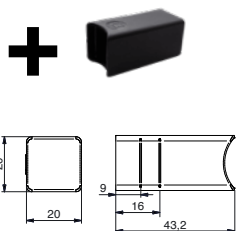
Cardine nylon rinforzato con clips + distanziale

Cod.		L	L1	
61PAZ86		135	121	50
61PAZ96		214	200	50
61PAZ8C		135	121	50



Cardine nylon rinforzato

Cod.		L	L1	
61PAZ46		90	76	50
61PBZ56		135	121	50
61PAZ4C		90	76	50



Cardine nylon rinforzato, inserto perno inox + distanziale

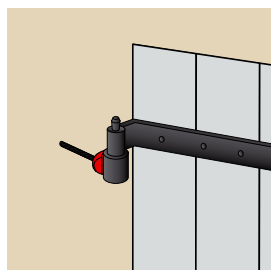
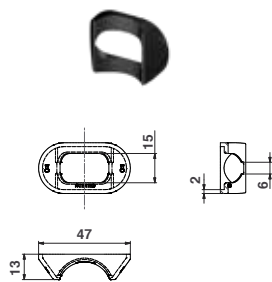
Cod.		L	L1	
61PAZ56		135	121	50

PERNO :

- ❶ Punta svasata che facilita la posa della persiana.
- ❷ Clips ergonomica mobile compatibile con bandelle da 35 e 40 mm.
- ❸ Inserto acciaio rinforzato per una robustezza superiore.
- ❹ Godronatura anti-gioco.
- ❺ Base flessibile per facile solidarizzazione nella pipetta.
- ❻ Trattamento anti UV.

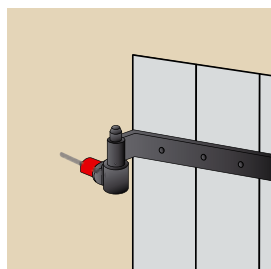
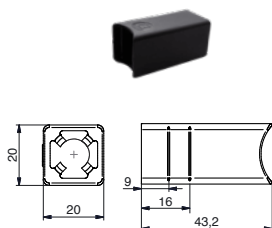
CORPO DEL PERNO :

- ❼ Smusso inferiore simmetrico ed elegante.
- ❽ Tacche anti-rotazione dopo posa.
- ❾ Inserto monoblocco forgiato senza saldatura per una resistenza ottimale ed una sicurezza aggiunta.
- ❿ Trattamento anti UV.



Rosetta di copertura nylon sagomata

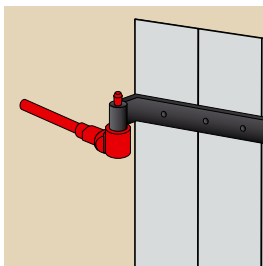
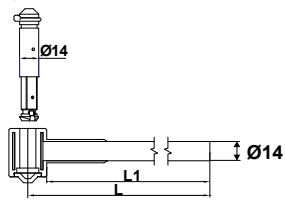
Cod.		
61PGZ206		50
61PGZ20C		50







Distanziale nylon quadrato Ø10

Cod.		
61PFZ2006		50

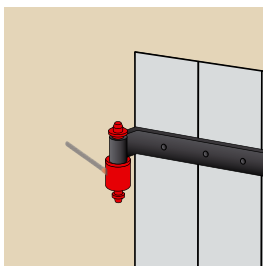
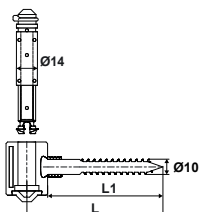
Cardini nylon



Cardine nylon rinforzato per cemento Ø14

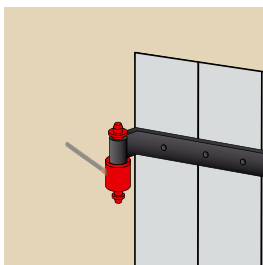
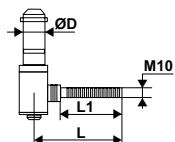
Cod.		L	L1	
61PEZ36		180	165	10
61PEZ66		300	285	10

Completo di distanziale, rosetta e tassello.








Cardine nylon vite legno con clips

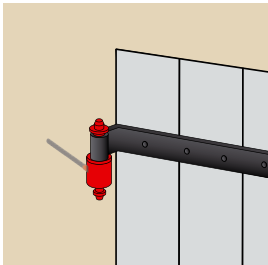
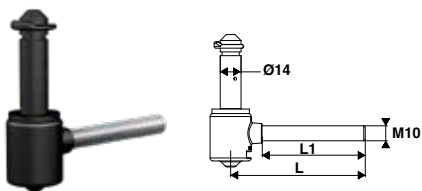
Cod.		L	L1	
61PBL06		90	80	50





Cardine nylon antisfilamento e antisollevamento vite metrica

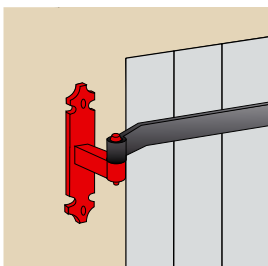
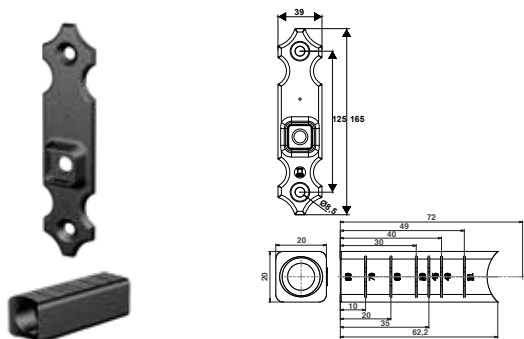
Cod.		L	L1	
61PA819		90	67	50
61PA839		125	102	50
61PA809		90	67	50

Cardini zama, cardini su piastra regol. zama



Cardine clips zama antisollevamento

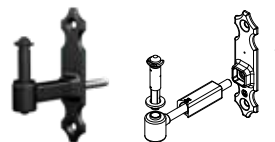
Cod.		L	L1	
61PB30J	9005	90	76	50
61PB31J	9005	135	121	50



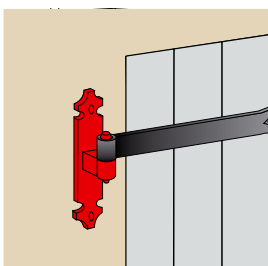
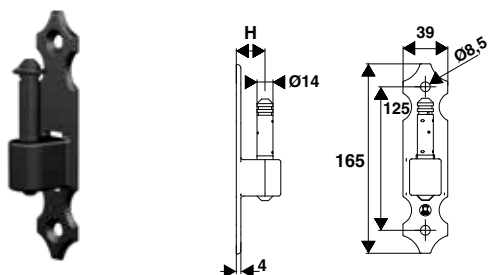
Distanziatore e piastra zama

Cod.		
61PB28J	9005	50

Completo di distanziale, rosetta e tassello.

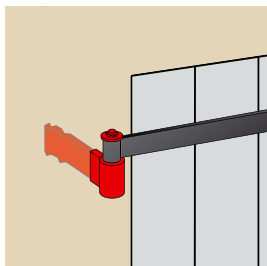
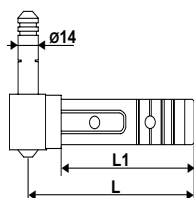


Per comporre il vostro cardine nylon su piastra ordinare un cardine nylon a scelta (senza distanziatore) ed il set distanziatore rifilabile + piastra.



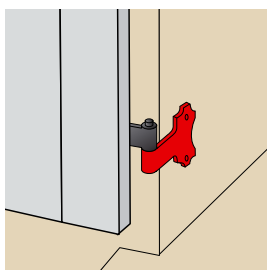
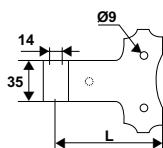
Cardine su piastra zama D14

Cod.		H	
61PB20J	9005	18	50



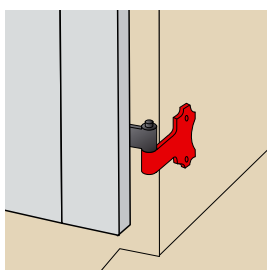
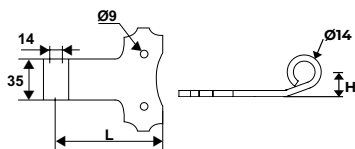
Cardine nylon a murare serie 3000

Cod.		L	L1	
61PA089		115	92	50



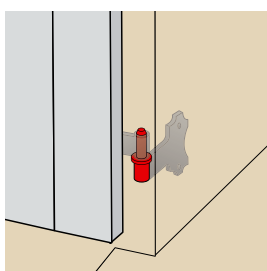
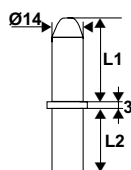
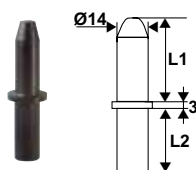
Cardine su spalla all. Ø14 senza perno

Cod.		L		
2 fori				
61PAT1J		85	50	
61PAT2J		118	50	
61PAT1P		85	50	
61PAT2P		118	50	
3 fori				
61PAT7J		118	50	



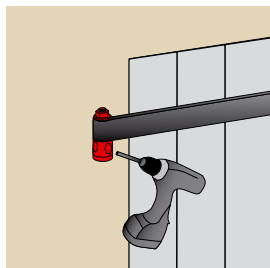
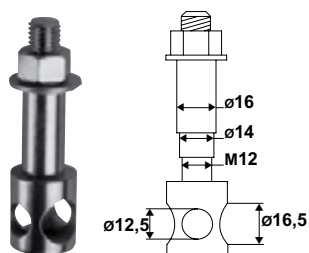
Cardine su spalla all. Ø14 con piego senza perno

Cod.		L	H	
61PAT3J		81	16	50
61PAT4J		117	16	50



Perno amovibile Ø14 nylon

Cod.		L1	L2	
61PAA39		40	35	10
61PAA19		40	35	10



Dima per foro universale

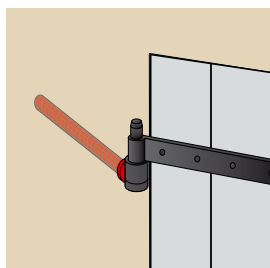
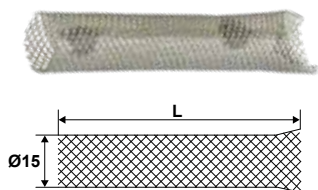
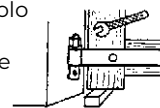
Cod.



99BS011 Z.BIANCO 1

Permette una foratura precisa e rapida per la posa dei cardini per resina chimica universale, si adatta ai diametri degli occhioli da 12, 14 e 16 mm.

- 1 - Posizionare la persiana in posizione chiusa.
- 2 - Posizionare la dima di foratura nell'occhiolo della bandella.
- 3 - Posizionare la base della dima in funzione del \varnothing e dell'orientamento di foratura, quindi serrare il dado.
- 4 - Forare il muro attraverso la dima.



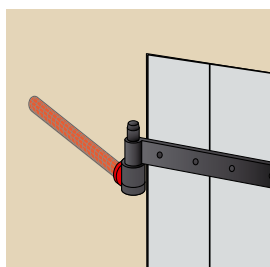
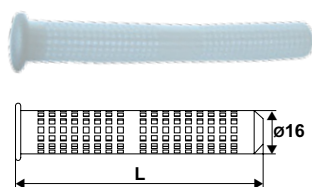
Calza metallica

Cod.



L

99BS921 Z.BIANCO 180 50



Calza nylon

Cod.



L



99BS800 85 100

99BS820 130 50



Facilità di montaggio : un taglio centrale permette il dimensionamento delle aste.
Affidabilità : l'allineamento dei componenti è garantito dalla scanalatura. Il posizionamento dei supporti guida garantisce una tenuta perfetta dopo assemblaggio.
Reversibilità : si utilizza sia a destra che a sinistra
Sicurezza : grazie al supporto fornito

Sacchetto accessori spagnoletta TUBRAIN®

Cod.		
04P1S5J	9005	25
04P1S5P	9016	25



Composizione

2 gancio alto e basso,
 1 maniglia montata su supporto maniglia,
 1 aggancio di sicurezza,
 1 cappuccio di protezione
 4 supporti guida NYLON.



Facilità di montaggio : la maniglia centrale su supporto passante può essere lasciata libera sull'asta e fissata all'altezza desiderata direttamente in cantiere.
Affidabilità : l'allineamento dei componenti è garantito dalla scanalatura. Il posizionamento dei supporti guida garantisce una tenuta perfetta dopo assemblaggio.
Incontro maniglia : rivisto, per una migliore tenuta della maniglia sul supporto

Sacchetto di accessori spagnoletta ESPAS®



Cod.		
Incontro maniglia 3 fori		
04PS50J	9005	10
04PS50P	9016	10
Incontro maniglia 2 fori decentrati		
04PS51J	9005	10
04PS51P	9016	25

Composizione

1 maniglia montata su supporto maniglia
 1 aggancio c/fissaggio centrale
 1 cappuccio di protezione
 1 gancio alto
 1 gancio basso
 4 guida asta S4

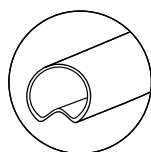
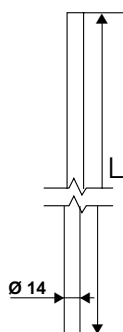


Kit spagnoletta Elica
2 ganci + supporti



Cod.		
04PA50J	9005	10
04PA50P	9016	10

Composizione

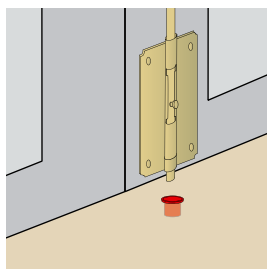
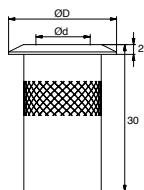
- 1 maniglia montata su supporto maniglia
- 1 incontro maniglia
- 1 cappuccio di protezione
- 2 ganci + supporti
- 1 guida asta per maniglia
- Set di tamponi



Asta spagnoletta alluminio
scanalata

Cod.		L	
04P213J	9005	1270	10
04P216J	9005	1570	10
04P223J	9005	2270	10
04P227J	9005	2700	10
04P246J	9005	4600	10
04P213P	9016	1270	10
04P216P	9016	1570	10
04P223P	9016	2270	10
04P227P	9016	2700	10
04P246P	9016	4600	10

Pozzetto

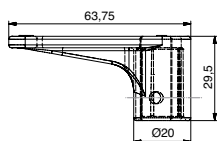


Pozzetto a molla antipolvere

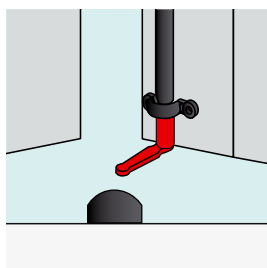
Cod.			Ød	ØD	
95PAA39	OTTONE		12	16	100
95PAA49	OTTONE		14	18	100

Ganci regolabili

Modello alto



Modello basso



Ganci regolabili zama da avvitare

Cod.		
------	--	--

Modello alto

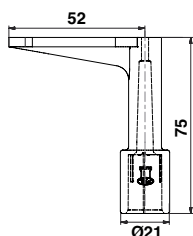
07PN07J	9005	100
07PN07P	9016	100

Modello basso

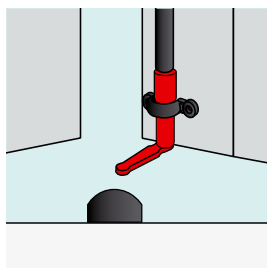
07PN08J	9005	100
07PN08P	9016	100

Regolabile in altezza, grazie al grano consentono un aggiustamento delle battute dopo la posa.

Modello alto



Modello basso



Ganci regolabili zama da incastrare

Cod.		
------	--	--

Modello alto

07TUZ5J	9005	50
07TUZ5P	9016	50

Modello basso

07TUZ6J	9005	50
07TUZ6P	9016	50

Convertitore SDO design verniciabile

Punti di forza

- Sostituisce i fermi di battuta a terra/sottotrave.
- Adattabile a tutte le aste scanalate d.14.
- Il fermo nylon e la piastrina di contatto all consentono l'arresto della seconda anta.

Venduto con accessori personalizzabili nelle nostre officine nel colore a vostra scelta.



- un carter nylon verniciabile ①
- un fermo nylon ②
- una piastrina di contatto all per il fermo nylon ③

Cover verniciabili nel colore delle vostre ante !









- Il Kit comprende anche uno spessore ④ e un pozzetto nylon ⑤.






Referenze

Convertitore SDO perno 46 mm all + accessori verniciabili

Cod.		
Modello alto		
95PA039		10
95PA049		10
Modello basso		
95PA019		10
95PA029		10

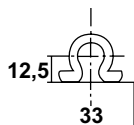
Convertitore SDO perno 66 mm inox + accessori verniciabili

Cod.		
Modello alto		
95PA659		10
Modello basso		
95PA649		10

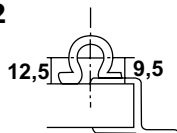
Guida asta



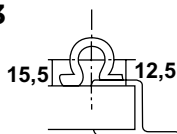
S1



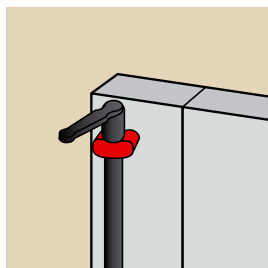
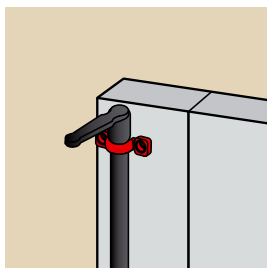
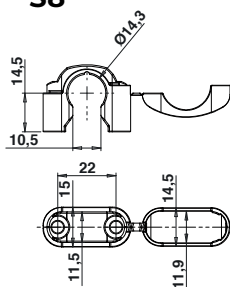
S2



S3

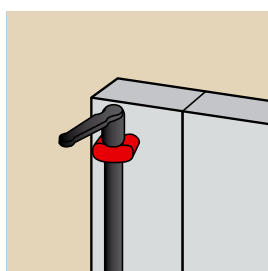
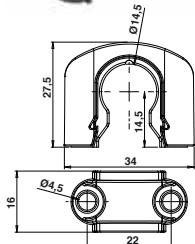


S8



Guida asta

Cod.		Tipo	
Nylon			
0740249		S1	150
0740259		S2	150
0740339		S3	150
07405S89		S8	150
0740269		S1	150
0740279		S2	150
0740349		S3	150
07405S8C		S8	150
Zama			
0740700	GREZZO	S1	100
074070J	9005	S1	100
074070P	9016	S1	100

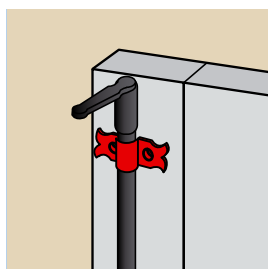
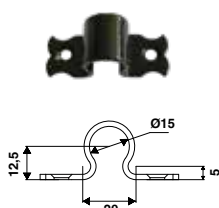


Guida asta S9 zama verniciabile

Cod.			
0740400*	GREZZO		100
074040J	9005		100
074040P	9016		100

* Modello grezzo consegnato con base nylon nero.

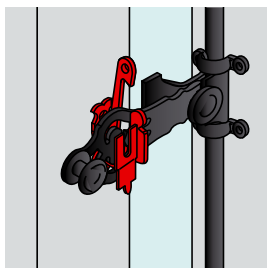
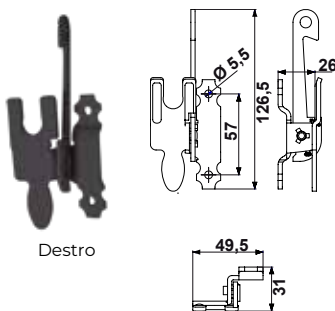
Zama verniciabile. Infinite personalizzazioni colore. Cover zama per viti a scomparsa, clipsata su base in nylon. Compatibili con viti D4,2 mm e rivetti D4 x 30 mm (Cod. 880404300F).



Guida asta rustico a piastra alluminio

Cod.			
07AL60J	9005		200

Incontri



Aggancio maniglia con sicurezza

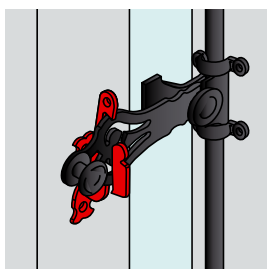
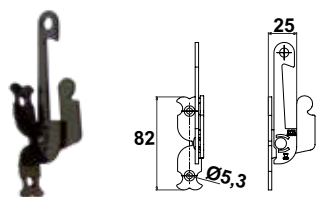
Cod.



Modello destro

07AL41J **9005** 50

07AL41P **9016** 50



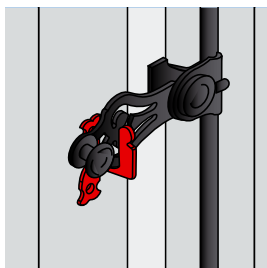
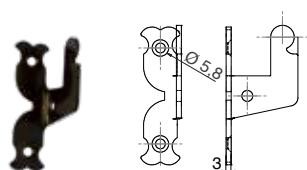
Aggancio maniglia con sicurezza

Cod.



07AL10J **9005** 50

07AL10P **9016** 50



Spessore per aggancio rustico e di sicurezza

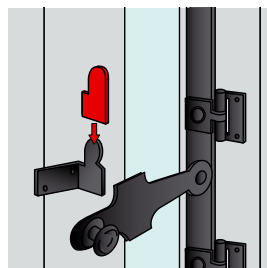
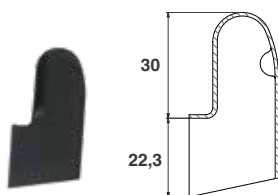
Cod.



07AL01J **9005** 50

07AL01P **9016** 50

Supporti e cappucci



Cappuccio nylon per aggancio alluminio

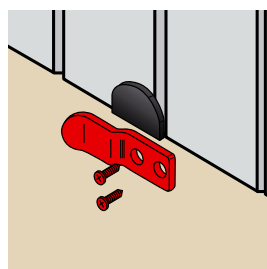
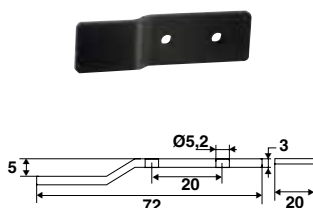
Cod.



07AL159 **9005** 50

07AL169 **9016** 50

07AL179 **NEUTRO** 50



Aggancio di richiamo alluminio

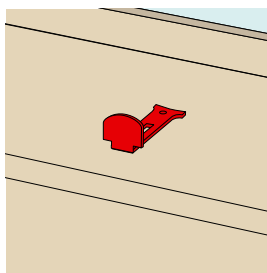
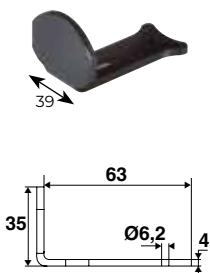
Cod.





503007J **9005** 20

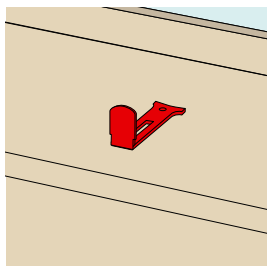
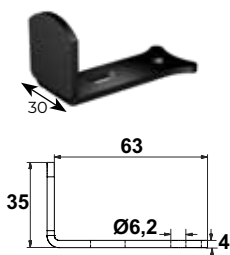
503007P **9016** 20

Economizza l'uso di una spagnoletta.





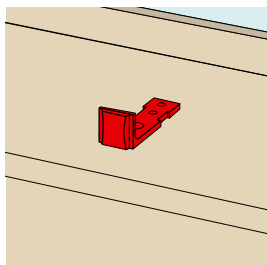
Fermo alluminio tipo L

Cod.		
07PAK2J	9005	100
07PAK2P	9016	100







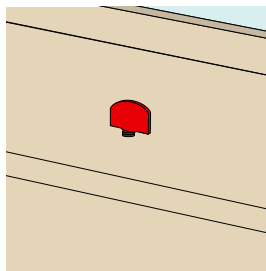
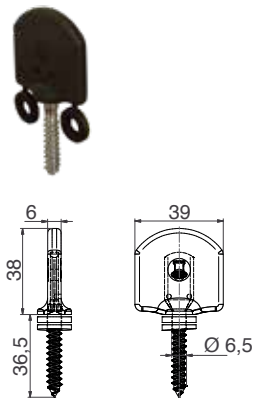
Fermo alluminio DMK regolabile

Cod.		
07PBK3J	9005	200
07PBK3P	9016	200



Fermo nylon

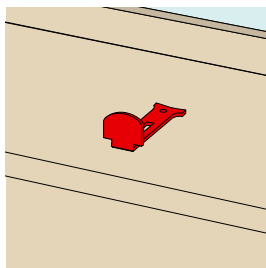
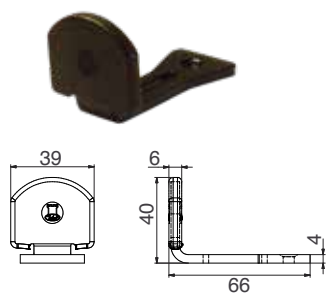
Cod.		
07P2019		100
07P3019		100



Fermo nylon S4000 ad avvitare

Cod.		
07PCK1J	9005	100
07PCK1Q	9016	100

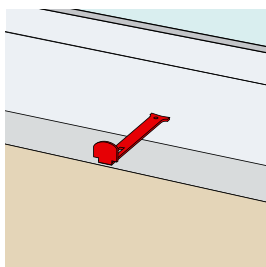
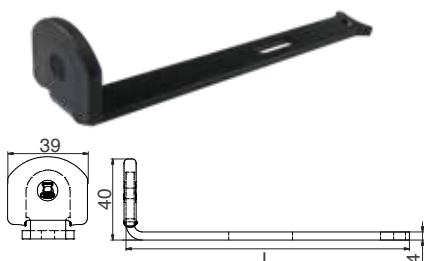
La versione da avvitare è proposta con 2 rondelle staccabili che consentono, in caso di necessità, di sistemare in altezza la posizione della battuta.



Fermo nylon S4000 standard

Cod.		
07PCK5J	9005	100
07PCK5Q	9016	100

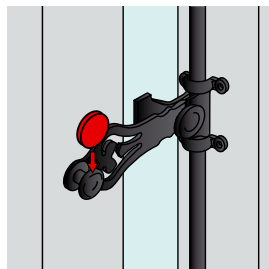
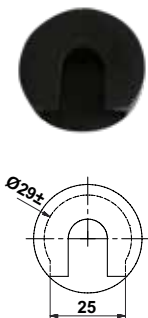
Foro oblungo che permette la regolazione della posizione della battuta in profondità.



Fermo nylon S4000 per isolamento esterno

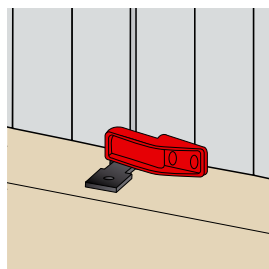
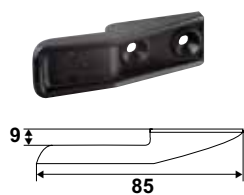
Cod.		L	
07PCK6J	9005	140	100
07PCK7J	9005	200	100

Ideale per configurazioni di posa con isolamento termico esterno.



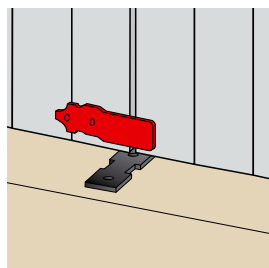
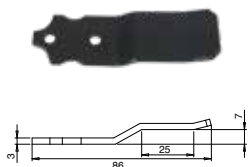
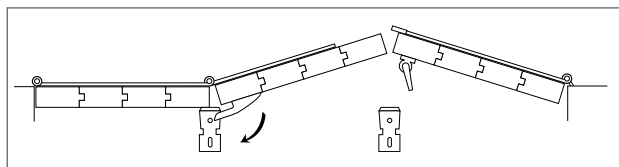
Cappuccio nylon per maniglia

Cod.		
07AL459	50	



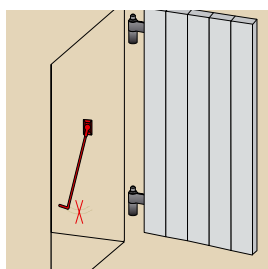
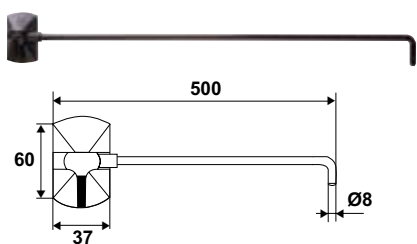
Aggancio di richiamo nylon

Cod.		
07Q2019	50	
07Q3019		50



Aggancio di richiamo alluminio

Cod.		
503011J	9005	50
503011P	9016	100



Braccio regolabile con viteria e tasselli

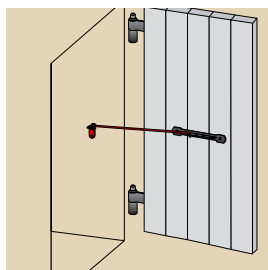
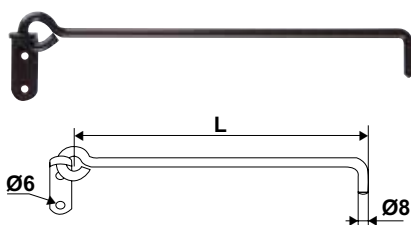
Cod.



92CR509 10

92CR519 10

Regolabile, evita i danni alla spalletta.



Braccio su piastra alluminio

Cod.



L



924D30J 9005 300 10

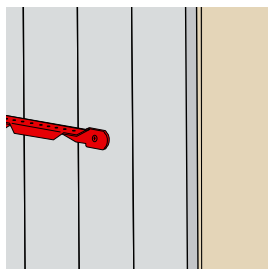
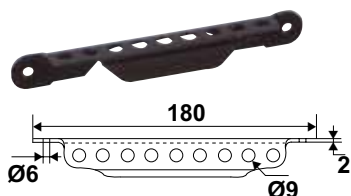
924D40J 9005 400 10

924D50J 9005 500 10

924D30P 300 10

924D40P 400 10

924D50P 500 10



Cremagliera TORBEL® in alluminio

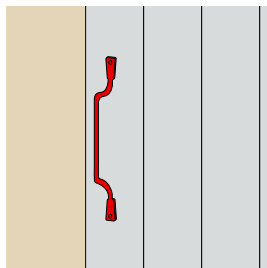
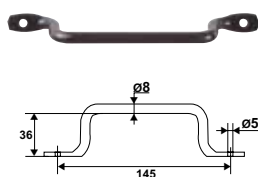
Cod.



924E01J 9005 10

924E01P 10

Un prodotto per una doppia funzione, la cremagliera Torbel® serve anche da maniglia per tirare l'anta a se.



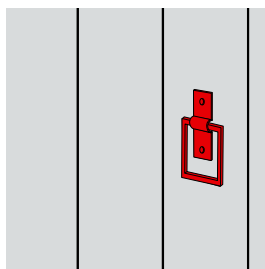
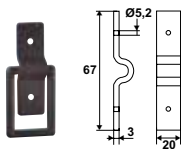
Maniglia in alluminio per persiana

Cod.



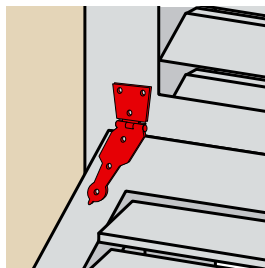
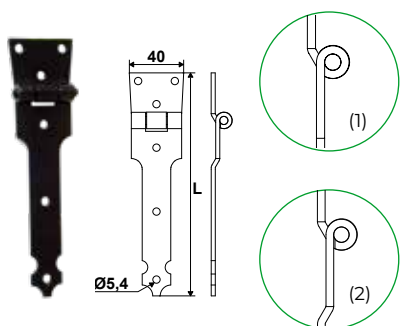
92PA20J 9005 20

92PA20P 20



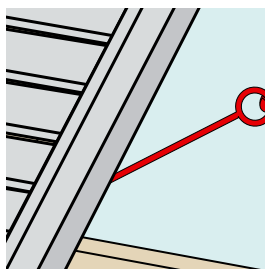
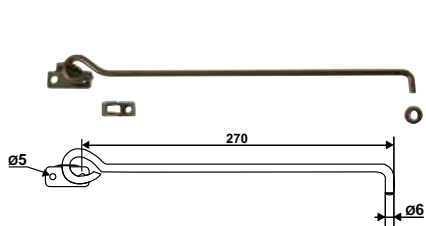
Anello in alluminio

Cod.		
920190J		10
9201919		10



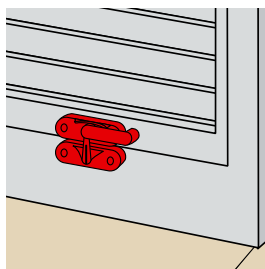
Mappa Nizza in alluminio

Cod.		
Piega singola		
92AL10J		20
Piega doppia		
92AL20J		20



Puntaletto D6 su piastrina forata

Cod.		
Sacchetto completo		
92AL30J		10



Chiavistello per sportellino

Cod.		
950500J		50